

Padlock Range



We take the worry out of
protecting what's valuable to you.
Lockwood: *no worries®*

LOCKWOOD

ASSA ABLOY

25YEAR

**MECHANICAL
WARRANTY**

www.lockweb.com.au

Contents

Value Range



110 Series

Brass Case Padlocks

page 5



140 Series

Combination Padlock

page 7



141 Series

Combination Padlock

page 9



150 Series

Combination Padlock

page 11

High Security



120N Series

Brass Case Padlocks
with Silicone Jackets

page 14



130 Series

Stainless Steel Padlock

page 16



334B Series

High Security Brass
Case Padlocks

page 18



334S Series

Steel Case Padlocks

page 20



334C Series

Shrouded Steel Case Padlocks

page 22



334M Series

Stainless Steel Case Padlocks

page 24

Contents

Maximum Security



270 Series

Steel Case Padlocks

page 27



290 Series

Steel Case Monoblock Padlocks

page 29



301 Series

Steel Case Padlocks

page 31



356 Series

Steel Case Padlocks

page 33

Safety Lockout



214 and 215 Series

Aluminium Case Padlocks

page 37



215P Series

Plastic Case Padlocks

page 39



225 Series

Zinc Case Padlock

page 41



312 Series

Padlocks

page 43



312 Series

Safety Lockout Kit Accessories

page 45



Trailer Air Coupling Lock

page 50



Padlock Accessories

page 57



Value Range Padlocks

Value Range Padlocks

110 Series Brass Case Padlocks



The Lockwood Solid Brass 110 Series Padlocks are designed for barrier and deterrent level protection in applications such as school lockers and letter boxes.

Features

- Pin tumbler mechanisms
- Self-latching shackle function
- Single locking on 20 and 25mm padlocks
- Double locking on 30, 35 and 40mm padlocks

Product Details

Case	Solid brass case extrusion
Shackles	Chrome plated, hardened steel shackles.

Standards and Compliance

UP TO GRADE 4

Physical Security grades are employed for padlocks. These grades are defined in part by the effective differs and key combinations. Padlocks Physical Security (SP) grade range up to Grade 4

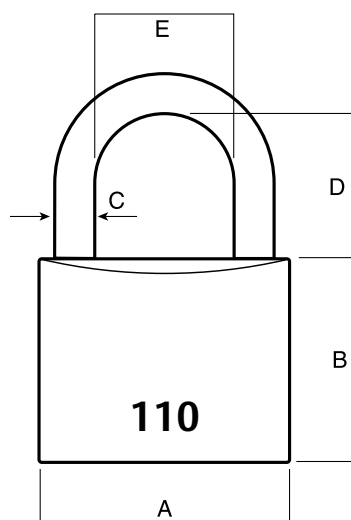


Anti-Corrosion. Corrosion Resistance Rating. Environments that are sometimes damp in the majority of rural and suburban localities, including interiors where condensation may occur

Designed and tested to the Australian Padlock Standard AS4145.4 2002 and are rated for both security and corrosion resistance.

Value Range Padlocks

110 Series Brass Case Padlocks



Specifications

Part Number	Dimensions (mm)					Physical Security Rating	Corrosion Resistance Rating
	A	B	C	D	E		
110/20/111	20	20.0	3.2	11	10	-	C2
110/25/115	25	24.5	4.0	15	13	SP1	C2
110/30/119	30	27.0	4.8	19	18	SP2	C3
110/35/121	35	29.5	5.5	21	19	SP3	C3
110/40/123	40	32.5	6.4	23	22	SP4	C3

Available Pack Variations

Part Number	NDP	2NDP	4NDP	KA
110/20/111	•	•	•	•
110/25/115	•	•	•	
110/30/119	•	•		
110/35/121	•			
110/40/123	•	•		

Value Range Padlocks

140 Series Combination Padlock



The Lockwood 140 Series Padlock is a 50mm stainless steel dial type combination padlock designed as basic protection for barrier and deterrent applications such as school lockers.

Features

- Thousands of possible combinations
- Steel latch mechanism
- Positive three digit dialling gives maximum combinations
- Anti manipulation feature standard
- Automatic combination scramble when shackle is closed to prevent unauthorised reopening of padlock
- Available in NDP (Display Pack), RC (Random Codes) and AC (Alike Codes)

Product Details

Case	Dual layer polished stainless steel body
Shackle	Case hardened 8mm diameter steel shackle

Standards and Compliance

SP3

Physical Security grades are employed for padlocks. These grades are defined in part by the effective differs and key combinations. Padlocks Physical Security (SP) grade 3

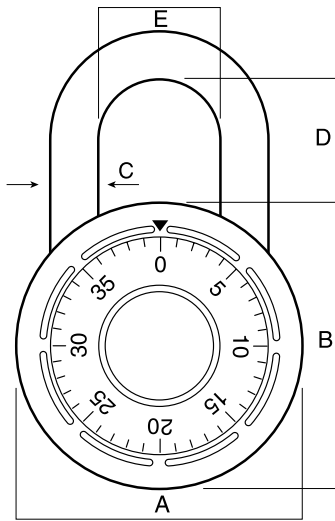


Anti-Corrosion. Corrosion Resistance Rating C3. Environments that are sometimes damp in the majority of rural and suburban localities, including interiors where condensation may occur

Designed and tested to the Australian Padlock Standard AS4145.4 2002 and are rated for both security and corrosion resistance.

Value Range Padlocks

140 Series Combination Padlock



Specifications

Part Number	Dimensions (mm)					Physical Security Rating	Corrosion Resistance Rating
	A	B	C	D	E		
140/50/122	50	50	8	22	21	SP3	C3

Value Range Padlocks

141 Series Combination Padlock



The Lockwood 141 Series Padlock is a 50mm stainless steel dial type combination padlock with key override. Designed as basic protection for barrier and deterrent applications such as school lockers where access by authorised staff is required.

Features

- Key override for immediate access by authorised staff
- Steel latch mechanism
- Brass 4 pin tumbler mechanism
- Brightly coloured dial for easy identification
- Positive three digit dialling gives maximum combinations
- Anti manipulation feature standard
- Automatic combination scramble when shackle is closed to prevent unauthorised reopening of padlock
- Keying and system management using Lockwood ProMaster software
- Combination code charts supplied with every order
- Available in RCKA (Random Codes, Keyed Alike) only

Product Details

Case	Dual layer polished stainless steel body
Shackles	Case hardened 8mm diameter steel shackle

Note: Minimum order quantity and minimum pack size 50

Standards and Compliance

SP3

Physical Security grades are employed for padlocks. These grades are defined in part by the effective differs and key combinations. Padlocks Physical Security (SP) grade 3

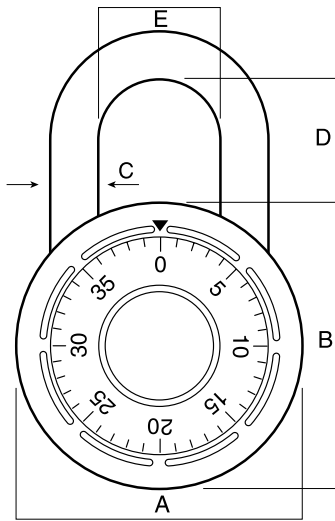


Anti-Corrosion. Corrosion Resistance Rating C3. Environments that are sometimes damp in the majority of rural and suburban localities, including interiors where condensation may occur

Designed and tested to the Australian Padlock Standard AS4145.4 2002 and are rated for both security and corrosion resistance.

Value Range Padlocks

141 Series Combination Padlock



Specifications

Part Number	Dimensions (mm)					Physical Security Rating	Corrosion Resistance Rating
	A	B	C	D	E		
141/50/122	50	50	8	22	21	SP3	C3

Value Range Padlocks

150 Series Combination Padlock



The Lockwood 150 Series Padlocks are brass case combination padlocks designed as basic protection for barrier and deterrent applications such as luggage and sports bags.

Features

- 1,000 resettable combinations

Product Details

Case	Solid brass case and wheels
------	-----------------------------

Note: Available in NDP (Display Pack) only

Standards and Compliance

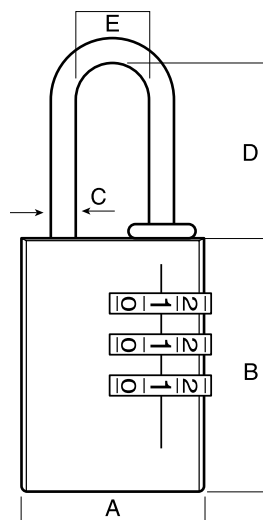


Anti-Corrosion. Corrosion Resistance Rating C2.
Environments that are sometimes damp in the majority of rural and suburban localities, including interiors where condensation may occur

Designed and tested to the Australian Padlock Standard AS4145.4 2002 and are rated for both security and corrosion resistance.

Value Range Padlocks

150 Series Combination Padlock



Specifications

Part Number	Dimensions (mm)					Physical Security Rating	Corrosion Resistance Rating
	A	B	C	D	E		
150/25/118/NDP	25	31.5	3.2	22	10	–	C2
150/30/125/NDP	31	40.0	4.8	25	14	–	C2
150/40/130/NDP	40	48.0	6.0	30	20	–	C2



High Security Padlocks

High Security Padlocks

120N Series Brass Case Padlocks with Silicone Jackets



The 120N Series Padlock range includes 14 different models, with single, twin and quad packs (keyed alike), as well as extended shackle lengths for selected models.

All padlocks in this range come complete with jackets made from a tough silicone material which is weather resistant and UV stable to resist the impact of harsh environments.

The jackets also provide protection for both the padlock and the object to which it is attached.

The 120N padlocks are suitable for general purpose applications providing for a broad range of applications.

Features

- Pin tumbler locking
- Self-latching shackle function
- Multipacks (keyed alike) on some 30mm and 40mm variants

Product Details

Case	Heavy duty solid brass bodies
Jacket	Protective silicone jackets. Individual jacket colours for each model
Shackles	Double locking shackle mechanism. Heavy duty chrome plated hardened steel shackles. Extended shackles on some 30mm and 40mm models

Standards and Compliance

SP2-6

Physical Security grades are employed for padlocks. These grades are defined in part by the effective differs and key combinations. Padlocks Physical Security (SP) grade range from 2-6

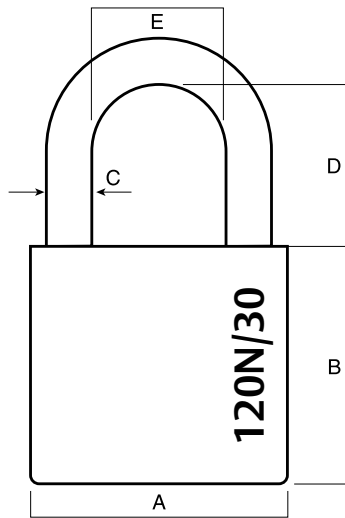


Anti-Corrosion. Corrosion Resistance Rating C3. Environments that are sometimes damp in the majority of rural and suburban localities, including interiors where condensation may occur

Designed and tested to the Australian Padlock Standard AS4145.4 2002 and are rated for both security and corrosion resistance.

High Security Padlocks

120N Series Brass Case Padlocks with Silicone Jackets



Specifications

Part Number	Dimensions (mm)					Physical Security Rating	Corrosion Resistance Rating
	A	B	C	D	E		
120N/30/118	30	30	5.0	18	17.0	SP3	C3
120N/30/150	30	30	5.0	50	17.0	SP2	C3
120N/30/180	30	30	5.0	80	17.0	SP2	C3
120N/35/123	35	32	6.4	23	18.0	SP4	C3
120N/40/125*	40	37	7.1	25	21.0	SP5	C3
120N/40/150	40	37	7.1	50	21.0	SP4	C3
120N/40/180	40	37	7.1	80	21.0	SP4	C3
120N/45/127	45	41	8.0	27	22.5	SP6	C3
120N/50/132*	50	46	9.5	32	25.5	SP6	C3
120N/60/135	60	50	10.0	35	35.0	SP6	C3

Available Pack Variations

Part Number	DP	2DP	4DP
120N/30/118	•	•	•
120N/30/150	•	•	•
120N/30/180	•	•	
120N/35/123	•		
120N/40/125*	•	•	•
120N/40/150	•		
120N/40/180	•		
120N/45/127	•		
120N/50/132*	•		
120N/60/135	•		

Please note: The extended shackle reduces the shackle resistance to twisting which reduces the overall security rating.

High Security Padlocks

130 Series Stainless Steel Padlock



The Lockwood 130 Series Padlock is a 70mm cylindrical stainless steel padlock designed for high security and high corrosion resistance applications.

Features

- Non-corroding internal components
- Pin tumbler mechanism
- Key retention in the unlocked position

Product Details

Case	Precision seam welded stainless steel case with drain holes
Shackle	Enclosed 9.5mm hardened alloy steel shackle

Standards and Compliance

SP7

Physical Security grades are employed for padlocks. These grades are defined in part by the effective differs and key combinations. Padlocks Physical Security (SP) grade 7

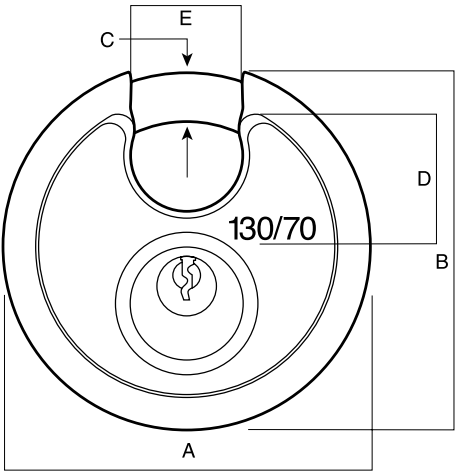


Anti-Corrosion. Corrosion Resistance Rating C4. Environments that are sometimes damp in the majority of rural and suburban localities, including interiors where condensation may occur

Designed and tested to the Australian Padlock Standard AS4145.4 2002 and are rated for both security and corrosion resistance.

High Security Padlocks

130 Series Stainless Steel Padlock



Specifications

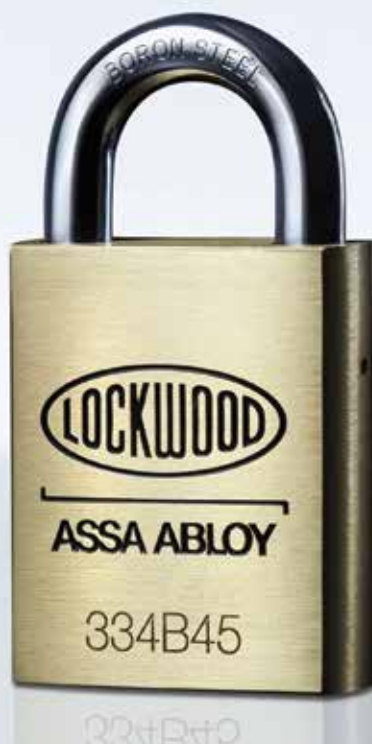
Part Number	Dimensions (mm)					Physical Security Rating	Corrosion Resistance Rating
	A	B	C	D	E		
130/70/125	70	67	9.5	16.5	20	SP7	C4

Available Pack Variations

Part Number	NDP	KD	KA
130/70/125	•	•	•

High Security Padlocks

334B Series Brass Case Padlocks



The Lockwood 334 Series Brass Case Padlock range features shackles suitable for commercial and industrial high security and high corrosion applications.

Features

- Double ball locking
- Stainless steel shackle models
- Standard as latching function
- Can be converted to deadlocking (key retained) by simply relocating the cam plate pin in the cylinder assembly

Product Details

Case	Heavy duty, solid brass case extrusion
Cylinders	334 top loaded cylinders are rekeyable in standard 5 pin with 6 pin capability (nickel silver keys with 6 pin padlocks). 334 cylinders are preloaded with one length top pins and stainless steel pin springs using a Lockwood 570 barrel.
Shackles	High corrosion resistant 8.7mm boron steel rapid change shackle. Rapid change function allows the release of the shackle by turning the key and depressing the pin. Extended shackle models

Note: Custom marking is available. Pricing and availability on application.

Standards and Compliance

SP5-7

Physical Security grades are employed for padlocks. These grades are defined in part by the effective differs and key combinations. Padlocks Physical Security (SP) grade range from 5-7

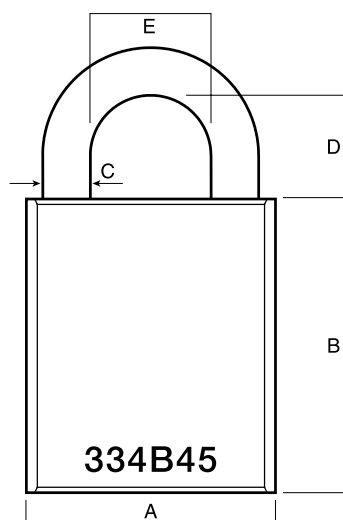


Anti-Corrosion. Corrosion Resistance Rating C4. Environments that are sometimes damp in the majority of rural and suburban localities, including interiors where condensation may occur

Designed and tested to the Australian Padlock Standard AS4145.4 2002 and are rated for both security and corrosion resistance.

High Security Padlocks

334B Series Brass Case Padlocks



Specifications

Part Number	Dimensions (mm)					Physical Security Rating	Corrosion Resistance Rating
	A	B	C	D	E		
334B45/119	45	55	8.7	19	22	SP7	C4
334B45/125	45	55	8.7	25	22	SP6	C4
334B45/138	45	55	8.7	38	22	SP6	C4
334B45/148	45	55	8.7	48	22	SP6	C4
334B45/190	45	55	8.7	90	22	SP5	C4

Available Pack Variations

Part Number	NDP	RKA	BK	5KA	5KD	6KA	6KD	6MK
334B45			•	•	•	•	•	•
334B45/119	•	•	•	•	•	•	•	•
334B45/125			•	•	•	•	•	•
334B45/138	•			•	•	•	•	•
334B45/148	•			•	•	•	•	•
334B45/190	•			•	•	•	•	•

High Security Padlocks

334 Series Steel Case Padlocks



The Lockwood 334 Steel Series Padlock range features shackles suitable for commercial and industrial high security and high corrosion applications offering added protection against attack.

Features

- Double ball locking
- Standard as latching function
- Can be converted to deadlocking (key retained) by simply relocating the cam plate pin in the cylinder assembly

Product Details

Case	Heavy duty, solid steel case
Cylinders	334 top loaded cylinders are rekeyable in standard 5 pin with 6 pin capability (nickel silver keys with 6 pin padlocks). 334 cylinders are preloaded with one length top pins and stainless steel pin springs using a Lockwood 570 barrel.
Shackles	High corrosion resistant 8.7mm chrome molybdenum steel alloy shackle. Extended shackle models

Note: Custom marking is available. Pricing and availability on application.

Standards and Compliance

SP6-8

Physical Security grades are employed for padlocks. These grades are defined in part by the effective differs and key combinations. Padlocks Physical Security (SP) grade range from 6-8

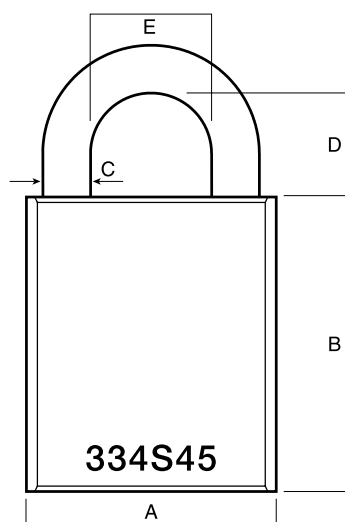


Anti-Corrosion. Corrosion Resistance Rating C4. Environments that are sometimes damp in the majority of rural and suburban localities, including interiors where condensation may occur

Designed and tested to the Australian Padlock Standard AS4145.4 2002 and are rated for both security and corrosion resistance.

High Security Padlocks

334 Series Steel Case Padlocks



Specifications

Dimensions (mm)

Part Number	A	B	C	D	E	Physical Security Rating	Corrosion Resistance Rating
334S45/519	45	55	8.7	19	22	SP8	C4
334B45/138	45	55	8.7	38	22	SP7	C4
334B45/148	45	55	8.7	48	22	SP7	C4
334B45/190	45	55	8.7	90	22	SP6	C4

Available Pack Variations

Part Number	NDP	BK	5KA	5KD	6KA	6KD	6KA	6KD	6MK
334S45		•	•	•	•	•	•	•	•
334S45/519		•	•	•	•	•	•	•	•
334S45/538	•		•	•	•	•	•	•	•
334S45/548			•	•	•	•	•	•	•
334S45/590			•	•	•	•	•	•	•

High Security Padlocks

334C Series Shrouded Steel Case Padlocks



The Lockwood 334 Steel Series Padlock features shackles suitable for commercial and industrial high security and high corrosion applications offering added protection against attack.

Features

- Double ball locking
- Standard as latching function
- Can be converted to deadlocking (key retained) by simply relocating the cam plate pin in the cylinder assembly

Product Details

Case	Heavy duty, solid steel case with shackle shroud
Cylinders	334 top loaded cylinders are rekeyable in standard 5 pin with 6 pin capability (nickel silver keys with 6 pin padlocks). 334 cylinders are preloaded with one length top pins, stainless steel pin springs using a Lockwood 570 barrel
Shackles	High corrosion resistant 8.7mm chrome molybdenum steel alloy shackle. Stainless steel shackle models. Extended shackle models

Note: Custom marking is available. Pricing and availability on application.

Standards and Compliance

SP8

Physical Security grades are employed for padlocks. These grades are defined in part by the effective differs and key combinations. Padlocks Physical Security (SP) grade 8

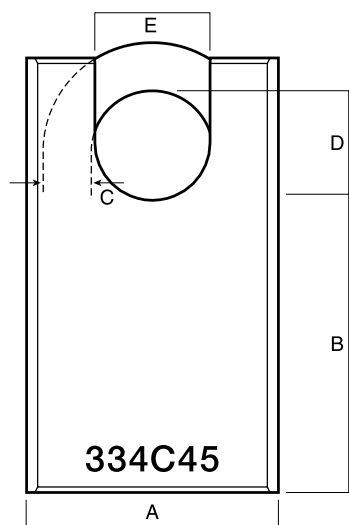


Anti-Corrosion. Corrosion Resistance Rating C4. Environments that are sometimes damp in the majority of rural and suburban localities, including interiors where condensation may occur

Designed and tested to the Australian Padlock Standard AS4145.4 2002 and are rated for both security and corrosion resistance.

High Security Padlocks

334C Series Shrouded Steel Case Padlocks



Specifications

Part Number	Dimensions (mm)					Physical Security Rating	Corrosion Resistance Rating
	A	B	C	D	E		
334C45/519	45	79	8.7	19	19	SP8	C4

Available Pack Variations

Part Number	NDP	BK	5KA	5KD	6KA	6KD	6MK
334S45		•					
334C45/519	•	•	•	•	•	•	•

High Security Padlocks

334M Series Stainless Steel Case Padlocks



The Lockwood 334 Series Stainless Steel Padlock range features stainless steel shackles suitable for commercial and industrial high security and high corrosion marine applications.

Features

- Double ball locking
- Standard as latching function
- Can be converted to deadlocking (key retained) by simply relocating the cam plate pin in the cylinder assembly

Product Details

Case	Heavy duty, solid stainless steel case
Cylinders	334 top loaded stainless steel cylinders are rekeyable in standard 5 pin with 6 pin capability (nickel silver keys with 6 pin padlocks). 334 cylinders are preloaded with one length top pins and stainless steel pin springs using a Lockwood 570 barrel.
Shackles	High corrosion resistant 8.7mm stainless steel shackle. Extended shackle models

Note: Custom marking is available. Pricing and availability on application.

Standards and Compliance

SP5-7

Physical Security grades are employed for padlocks. These grades are defined in part by the effective differs and key combinations. Padlocks Physical Security (SP) grade range from 5-7

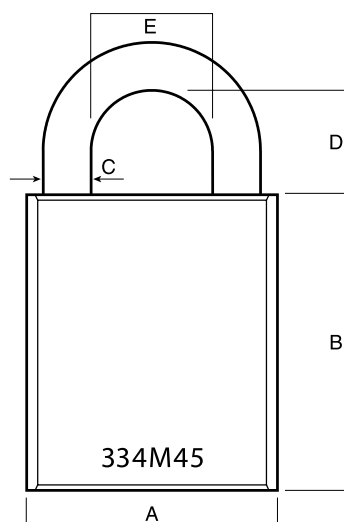


Anti-Corrosion. Corrosion Resistance Rating C5. Environments that are sometimes damp in the majority of rural and suburban localities, including interiors where condensation may occur

Designed and tested to the Australian Padlock Standard AS4145.4 2002 and are rated for both security and corrosion resistance.

High Security Padlocks

334M Series Stainless Steel Case Padlocks



Specifications

Dimensions (mm)

Part Number	A	B	C	D	E	Physical Security Rating	Corrosion Resistance Rating
334M45/619	45	55	8.7	19	22	SP7	C5
334M45/638	45	55	8.7	38	22	SP6	C5
334M45/648	45	55	8.7	48	22	SP6	C5
334M45/690	45	55	8.7	90	22	SP5	C5

Available Pack Variations

Part Number	NDP	BK	5KA	5KD	6KA	6KD	6MK
334M45		•	•	•	•	•	•
334M45/619	•	•	•	•	•	•	•
334M45/638		•	•	•	•	•	•
334M45/648		•	•	•	•	•	•
334M45/690		•	•	•	•	•	•



Maximum Security Padlocks

Maximum Security Padlocks

270 Series Steel Case Padlocks



The Lockwood 270 Series Steel Padlock features a high strength steel shackle designed for maximum security and high corrosion resistance including commercial and industrial applications.

Features

- Deadlocking double ball locking
- Standard as deadlocking (key retained) function

Product Details

Case	Heavy duty, solid steel case
Cylinders	270 top loaded cylinders are rekeyable in standard 5 pin with 6 pin capability (nickel silver keys with 6 pin padlocks). 270 cylinders are preloaded with one length top pins and stainless steel pin springs using a Lockwood 570 barrel.
Shackles	Tough high corrosion resistant 14mm chrome molybdenum steel alloy shackle

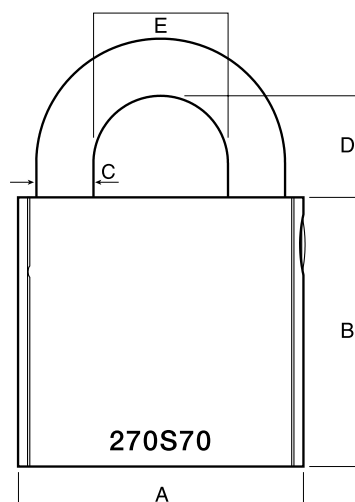
Note: Custom marking is available. Pricing and availability on application.

Standards and Compliance

SP9	Physical Security grades are employed for padlocks. These grades are defined in part by the effective differs and key combinations. Padlocks Physical Security (SP) grade 9
	Anti-Corrosion. Corrosion Resistance Rating C4. Environments that are sometimes damp in the majority of rural and suburban localities, including interiors where condensation may occur
	Designed and tested to the Australian Padlock Standard AS4145.4 2002 and are rated for both security and corrosion resistance.

Maximum Security Padlocks

270 Series Steel Case Padlocks



Specifications

Part Number	Dimensions (mm)					Physical Security Rating	Corrosion Resistance Rating
	A	B	C	D	E		
270S70/125	70	66	14	25	33	SP9	C4

Available Pack Variations

Part Number	BK	5KA	5KD	6KA	6KD	6MK	D5KA	D5KD	D6KA	D6KD	D6MK	NDP
270S70/125	•	•	•	•	•	•	•	•	•	•	•	•

Maximum Security Padlocks

290 Series Steel Case Monoblock Padlocks




The Lockwood 290 Series Steel Padlock features a high strength steel shackle designed for maximum security and high corrosion resistance including commercial and industrial applications.

Features

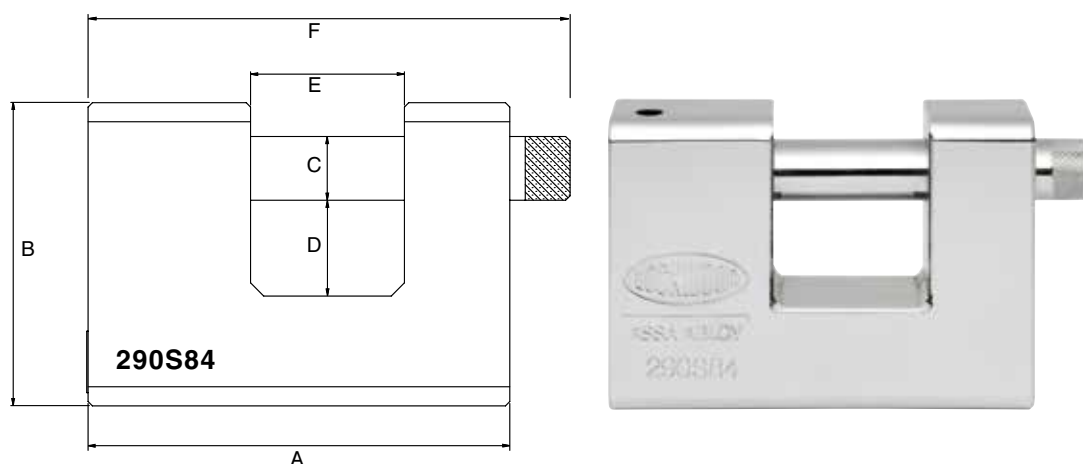
- Standard as deadlocking function

Product Details	
Case	Heavy duty, solid steel case
Cylinders	290 top loaded cylinders are rekeyable in standard 5 pin with 6 pin capability (nickel silver keys with 6 pin padlocks). 290 cylinders are preloaded with one length top pins and stainless steel pin springs using a Lockwood 570 barrel.
Shackles	Tough high corrosion resistant 14.5mm steel alloy shackle

Standards and Compliance	
SP10	Physical Security grades are employed for padlocks. These grades are defined in part by the effective differs and key combinations. Padlocks Physical Security (SP) grade 10
	Anti-Corrosion. Corrosion Resistance Rating C4. Environments that are sometimes damp in the majority of rural and suburban localities, including interiors where condensation may occur
	Designed and tested to the Australian Padlock Standard AS4145.4 2002 and are rated for both security and corrosion resistance.

Maximum Security Padlocks

290 Series Steel Case Monoblock Padlocks



Specifications

Dimensions (mm)

Part Number	A	B	C	D	E	F	Physical Security Rating	Corrosion Resistance Rating
290S84/120	96	69	14.5	21.8	35	110	SP10	C4

Available Pack Variations

Part Number	BK	5KA	5KD	6KA	6KD	6MK	D5KA	D5KD	D6KA	D6KD	D6MK	NDP
290S84/120	•	•	•	•	•	•	•	•	•	•	•	•

Maximum Security Padlocks

301 Series Steel Case Padlocks



The Lockwood 301 Series Padlock features a high strength steel shackle designed for maximum security and high corrosion resistance including commercial and industrial applications.

Features

- Deadlocking double ball locking
- Standard as deadlocking (key retained) function

Product Details

Case	Heavy duty, solid steel case
Cylinders	301 top loaded cylinder is rekeyable in standard 5 pin with 6 pin capability.
Shackles	Tough high corrosion resistant 11mm chrome molybdenum steel alloy shackle

Standards and Compliance

SP8

Physical Security grades are employed for padlocks. These grades are defined in part by the effective differs and key combinations. Padlocks Physical Security (SP) grade 8

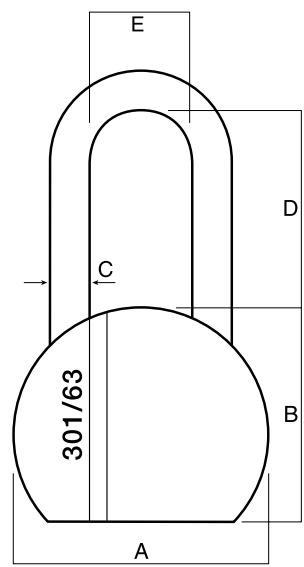


Anti-Corrosion. Corrosion Resistance Rating C3. Environments that are sometimes damp in the majority of rural and suburban localities, including interiors where condensation may occur

Designed and tested to the Australian Padlock Standard AS4145.4 2002 and are rated for both security and corrosion resistance.

Maximum Security Padlocks

301 Series Steel Case Padlocks



Specifications

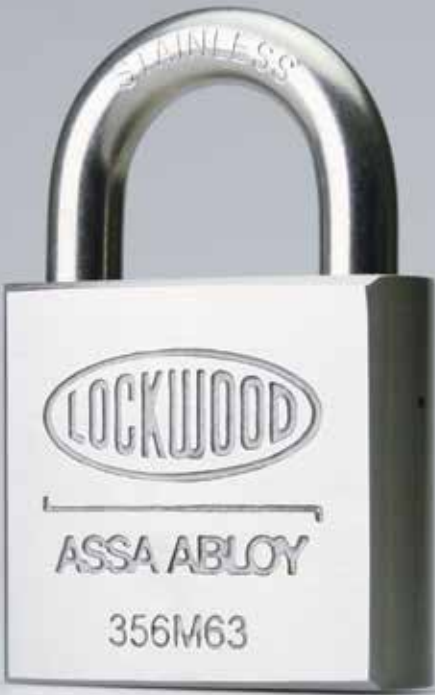
Part Number	Dimensions (mm)					Physical Security Rating	Corrosion Resistance Rating
	A	B	C	D	E		
301/63/154	63	55	11	48	24	SP8	C4

Available Pack Variations

Part Number	NDP
301/63/154	•

Maximum Security Padlocks

356 Series Steel Case Padlocks



The Lockwood 356 Series Padlocks are a range of padlocks with steel and stainless steel bodies and shackles designed for maximum security and high corrosion resistance including commercial and industrial applications.


Features

- Double ball locking
- Extended shackle models
- Standard as deadlocking (key retained) function

Product Details

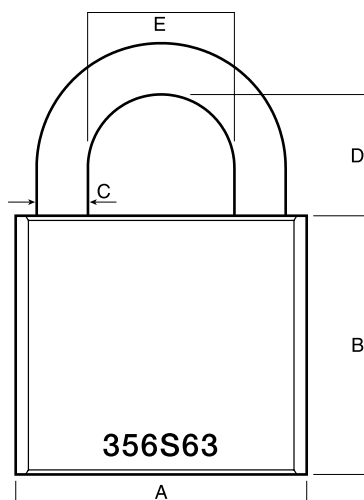
Case	Heavy duty, solid steel and stainless steel cases
Cylinders	356 top loaded cylinders are rekeyable in standard 5 pin with 6 pin capability (nickel silver keys with 6 pin padlocks). 356 cylinders are preloaded with one length top pins and stainless steel pin springs using a Lockwood 570 barrel.
Shackles	Tough, high corrosion resistant 11mm chrome molybdenum steel alloy and stainless steel shackles

Standards and Compliance

SP8	Physical Security grades are employed for padlocks. These grades are defined in part by the effective differs and key combinations. Padlocks Physical Security (SP) grade 8
	Anti-Corrosion. Corrosion Resistance Rating C5. Environments that are sometimes damp in the majority of rural and suburban localities, including interiors where condensation may occur
	Designed and tested to the Australian Padlock Standard AS4145.4 2002 and are rated for both security and corrosion resistance.

Maximum Security Padlocks

356 Series Steel Case Padlocks



Specifications

Part Number	Dimensions (mm)					Physical Security Rating	Corrosion Resistance Rating
	A	B	C	D	E		
356S63/525	63	56	11	25	32	SP8	C3
356S63/550	63	56	11	50	32	SP8	C5

Available Pack Variations

Part Number	BK	5KA	5KD	6KA	6KD	6MK	NDP
356S63/525	•	•	•	•	•	•	•
356S63/550	•	•	•	•	•	•	•

Padlocks

Ordering Procedure

Padlock Configuration Matrix (for Reference Only)

Sample part number 356S63/525/NDP is made up of several sections. Choose your product by selecting an option from each section.:

Padlocks Ordering Procedure

Padlock Series	Case Config.	Case	Shackle Material	Shackle Opening	Pack Types & Keying
344	B	45	1	19	NDP

Padlock Series	
Value	110
High Security	120N
High Security with Shroud	121
High Security Cylindrical	130
Value Dial Combination	140
Value Dial Combination with Key Override	141
Value Wheel Combination	150
High Security	334
Maximum Security	356
Maximum Security	270
Maximum Security	290
Maximum Security	301

Case Configuration	
Brass	B
Steel	S
Closed (Shrouded) Steel	C
Stainless Steel (Marine Application)	M

Case	
Nominal Size in mm	
Shackle Material	
Boron	1
Molybdenum	5
Stainless Steel	6
Polymer	8

Shackle Opening

Nominal Vertical Clearance in mm

Pack Types & Keying	
Single Display Pack	NDP
Two Display Pack	2NDP
Four Display Pack	4NDP
Keyed Alike	KA
5 Pin Random	
Keyed Alike Carton	RKA
5 Pin Keyed Alike	5KA
5 Pin Keyed to Differ	5KD
6 Pin Keyed to Differ	6KA
6 Pin Keyed to Differ	6KD
6 Pin Master Keyed	6MK
Bulk	BK
Locksmith	LS
Random Codes	
Keyed Alike (141 Series)	RCKA
Alike Codes (140 Series)	AC
Random Codes (140 Series)	RC

Please note: In order to simplify the process of ordering keyed alike and master keyed padlocks, the keying component is incorporated into the product number as shown in the above diagram and the list pricing. This means there is no longer a requirement for separate keying charges on padlocks.

The master key MK code covers the following keying options: master keyed, grand master keyed and maison keyed.

When ordering MK padlocks please specify the keying details.

**Part number convention
is for reference only.**



Safety Lockout Padlocks

Safety Lockout Padlocks

214 and 215 Series Aluminium Case Padlocks



The Lockwood 214 and 215 Aluminium Series Padlocks are a range of durable, rugged and lightweight 40mm aluminium case padlocks with full commercial grade special keying. The range has been specifically designed to meet the requirements of commercial and industrial applications. Along with a range of eight clearly identified coloured jackets, it is ready to be custom marked to make lock identification easy.

Features

- Self latching double ball locking
- Can be converted from self latching to dead-locking (key retained) by simply relocating the cam plate pin in the cylinder assembly
- Clearly identified jackets in 8 colours

Product Details

Case	Heavy duty, aluminium case extrusion
Cylinders	334B top loaded cylinders are rekeyable in standard 5 pin with 6 pin capability (nickel silver keys with 6 pin padlocks). 334B cylinders are preloaded with one length top pins and stainless steel pin springs using a Lockwood 570 barrel.
Shackles	High corrosion resistant 5.0mm (214 model) or 6.4mm (215 model) stainless steel shackle. Extended shackle model

Note: Custom marking is available. Pricing and availability on application.

Standards and Compliance

SP3-6

Physical Security grades are employed for padlocks. These grades are defined in part by the effective differs and key combinations. Padlocks Physical Security (SP) grade range from 3-6

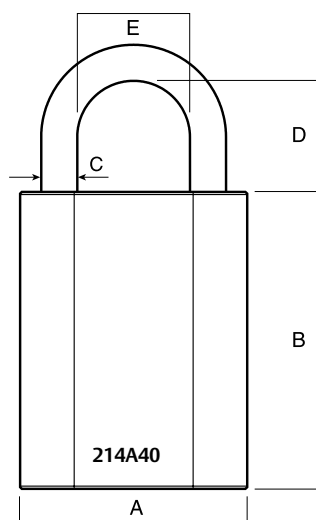


Anti-Corrosion. Corrosion Resistance Rating C4.
Environments that are sometimes damp in the majority of rural and suburban localities, including interiors where condensation may occur

Designed and tested to the Australian Padlock Standard AS4145.4 2002 and are rated for both security and corrosion resistance.

Safety Lockout Padlocks

214 and 215 Series Aluminium Case Padlocks



Specifications

Part Number	Dimensions (mm)					Physical Security Rating	Corrosion Resistance Rating
	A	B	C	D	E		
214A40/619	40	52	5.0	19	21	SP4	C4
214A40/650	40	52	5.0	50	21	SP3	C4
215A40/619	40	52	6.4	19	20	SP6	C4
215A40/650	40	52	6.4	50	20	SP5	C4

Available Pack Variations

Part Number	RKA	BK	5KA	5KD	6KA	6KD	6MK	DRKA	D5KA	D5KD	D6KA	D6KD	D6MK
214A40/619	•	•	•	•	•	•	•	•	•	•	•	•	•
214A40/650	•	•	•	•	•	•	•	•	•	•	•	•	•
215A40/619	•	•	•	•	•	•	•	•	•	•	•	•	•
215A40/650	•	•	•	•	•	•	•	•	•	•	•	•	•

Safety Lockout Padlocks

215P Series Plastic Case Padlocks



The Lockwood 215P Series Plastic Body Padlocks have been specifically designed for the electrical and mining safety lockout industries. When specified with a polymer shackle the padlock becomes completely non-conductive allowing for safety lockout within electrical applications.

Features

- Excellent corrosion resistance
- All components are non-sparking
- All components are non-magnetic
- Meets OH&S guidelines of one employee, one padlock and one key

Keying and Cylinders

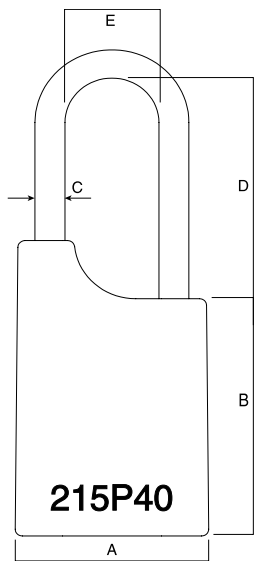
- 6 pin 570 barrel with 334B cylinder housing
- The standard key supplied is restricted E3 profile with no duplication possible as key head is exclusively stamped 'Safety Do Not Copy'
- Bulk locksmith versions are available to allow for keying to existing systems

Product Details

Case	Available in 6 colours. Includes write on "Danger" label
Shackles	Available in brass, stainless steel and polymer shackles

Safety Lockout Padlocks

215P Series Plastic Case Padlocks



Specifications

Dimensions (mm)

Part Number	A	B	C	D	E
215P40/850	40	52	6	50	20

Available Pack Variations

Part Number	RKA	6KD	BK
215P40/850	•	•	•
215P40/250	•	•	•
215P40/225	•	•	•

225 Series Padlock



The Lockwood 225 Series Padlock is a 40mm zinc diecast padlock with a powdercoated finish.

Features and Specifications

- Primarily used for keying applications
- Disc tumbler mechanism
- Self latching, single locking mechanism

Product Details

Case	High purity, diecast, zinc alloy case
Shackles	6.4mm zinc plated hardened steel shackle

Note: Standard 003 Fire Industry Lock available in Red - Part No. 225/40/119/003. All other combinations are in Brown.

Standards and Compliance

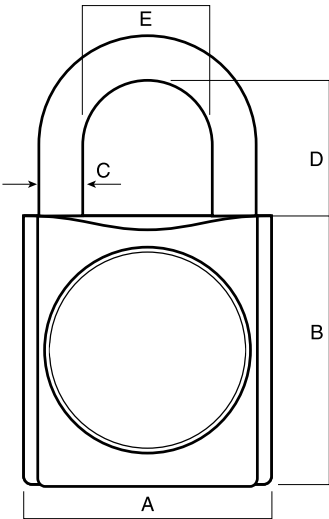
S3 High security for maximum protection (AS4145.2:1993).

D3 High durability for maximum frequency usage.



Anti-Corrosion.

225 Series Padlock



Product Details– Dimensions

	A	B	C	D	E
225/40/119	38	38	6.4	19	19.5

Available Pack Variations

	RKA	LS	KA	KD	E
225/40/119	•	•	•	•	

312 Series Padlocks



The Lockwood 312 Series Safety Lockout Padlocks are a durable and rugged 30mm brass padlock that has been specifically designed to meet the requirements of safety lockout applications.

Multiple departments or jobs can be easily identified using one of the jacket options. Laser etching is also optional for individual identification when using the windowed jacket options.

Features and Specifications

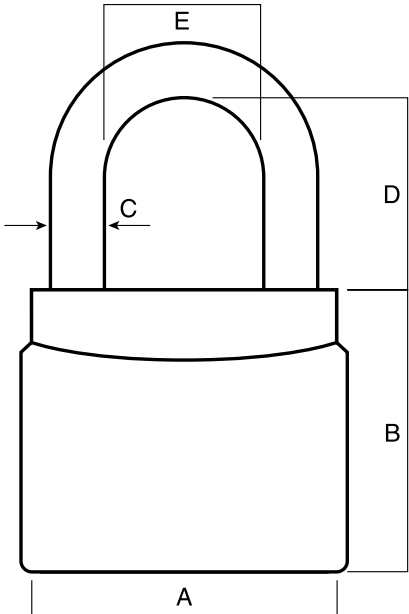
- Primarily used for keying applications
- 6 pin tumbler mechanism
- Self latching or deadlocking (key retained)
- Double locking

Product Details

Case	Solid brass case extrusion
Shackles	4.8 mm stainless steel shackle. Extended shackle models

Note: Custom marking is available. Pricing and availability on application.

312 Series Padlocks



Product Details– Dimensions

	A	B	C	D	E
312##19	29	34	4.8	19	16
312##38	29	34	4.8	38	16
312##50	29	34	4.8	50	16

312 Series Safety Lockout Kit - Accessories



The Lockwood Safety Lockout Kit includes all the equipment your personnel require to implement safety lockout procedures.

Product Details

Carry Case	A robust carry case with a clear face compartment—attaches easily and comfortably to the belt
Padlocks	Four keyed alike Lockwood Safety Lockout Padlocks with 50 mm hardened steel shackles and colour coded covers
Key Ring	Retractable steel line key ring holder with one colour coded cut key
Jaws	Lockout jaws to fit Lockwood Safety Padlocks

312 Series Safety Lockout Kit - Accessories

Padlock Holder for 4 Padlocks

Part Number	312 Holder/4
Finish	Black

The Lockwood 312 Holder/4 has the capacity to hold four 312 Lockwood Padlocks (19 mm – 80 mm shackle), a retractable 312 Keyline and 312 Series Safety Jaws.

The carry case is designed to be easily fitted onto your belt. The 312 Holder also includes a clear face compartment which makes identification easy.

Note: Padlocks and Accessories are ordered separately.



Padlock Holder for 6 Padlocks

Part Number	312 Holder/6
Finish	Black

The Lockwood 312 Holder/6 has the capacity to hold six 312 Lockwood Padlocks (19 mm – 80 mm shackle), a retractable 312 Keyline and the 312 Series Safety Jaws.

The carry case is designed to be easily fitted onto your belt. The 312 Holder also includes a clear face compartment which makes identification easy.

Note: Padlocks and Accessories are ordered separately.



Retractable Key Holder

Part Number	312 Keyline
Finish	Chrome Plate/Black

This compact retractable key holder incorporates a spring loaded mechanism, a robust steel cable line and key ring.

The built in clip allows easy fitting onto the 312 Holder, or can be used independently. The 312 Keyline ensures keys are easily accessible when needed.

Note: Padlocks and Accessories are ordered separately.



312 Series Safety Lockout Kit - Accessories

Safety Lockout Jaws

Part Number 312 Jaws

The safety lockout jaws ensure that machinery stays 'locked out' until each person removes his/her padlock from the hasp. This prevents any accidental re-energising of machinery before crews have completed their work.

The 312 Jaw holds up to six 312 padlocks and is made from hardened steel with a vinyl coating.

Note: Padlocks and Accessories are ordered separately.
Also available - 38mm version and 7 hole versions



Lockout Permit to Work Red Board

Part Number 312PTW/A

The Lockwood 312PTW/A Lockout Permit to Work Board has been designed to be used when multiple isolations are required. Durable construction from 1.2 mm aluminium and 4 mm clear acrylic sheet.

- Durable construction from 1.2 mm aluminium and 4 mm clear acrylic sheet
- Lightweight and easy to transport—including integral handle
- Clear tough acrylic pocket protects permit or procedure

Note: Padlocks and Accessories are ordered separately.



Available Pack Variations

Item	Description
312Holder/6	312 Holder for 6 Padlocks
312Jaws	312 Lockout Jaws 25mm
312Jaws/38	312 Lockout Jaws 38mm
312Jaws/7	312 Lockout Jaws 7 Holes 25mm
312Keytag1/78	312 Key Tag 1/78
312PTW/A	Permit to Work Board

312 Series Safety Lockout Range - Accessories

Lock Box - 13 Hole Red

Part Number 312LB/13

Group Lockout Boxes are used for isolating energy points when a large team is working. Using a group lockout box ensures staff safety by preventing activation of energy points until all maintenance locks have been removed.

Accepts 13 lockout padlocks.



Lockout Station - 40 Padlock Capacity

Part Number 312LOS/40

Conveniently store your most used lockout items close to lockout points. Two padlock rails have capacity for up to 40 lockout padlocks plus two stepped tag holders and a smaller rail for lockout hasps.

Simply add extra stations to increase capacity for larger requirements.



Adjustable Gate Valve - Large 205mm

Part Number 312AGV/205

Easily lockout gate valves of various sizes with this adjustable device. No need to carry multiple sizes of lockout devices.

Adjusts to accommodate a gate valve up to 205mm diameter. Use a lockout hasp when multiple padlocks are required.



312 Series Safety Lockout Range - Accessories

PVC Lockout Tag - Information Do Not Operate

Part Number 312LOT/P1

Finish Green

The Lockout Tag range allows hazards to be easily identified for a range of industrial applications where safety lockouts of equipment are required. Dedicated colour allows for easy identification of lockout situation.



PVC Lockout Tag - Exclusive Control

Part Number 312LOT/P2

Finish Blue

The Lockout Tag range allows hazards to be easily identified for a range of industrial applications where safety lockouts of equipment are required. Dedicated colour allows for easy identification of lockout situation.



PVC Lockout Tag - Personal Danger Do Not Operate

Part Number 312LOT/P3

Finish Red

The Lockout Tag range allows hazards to be easily identified for a range of industrial applications where safety lockouts of equipment are required. Dedicated colour allows for easy identification of lockout situation.



PVC Lockout Tag - Out of Service Do Not Operate

Part Number 312LOT/P4

Finish Yellow

The Lockout Tag range allows hazards to be easily identified for a range of industrial applications where safety lockouts of equipment are required. Dedicated colour allows for easy identification of lockout situation.



PVC Lockout Tag - Danger Do Not Operate

Part Number 312LOT/P5

Finish Orange

The Lockout Tag range allows hazards to be easily identified for a range of industrial applications where safety lockouts of equipment are required. Dedicated colour allows for easy identification of lockout situation.



Trailer Air Coupling Lock



The Lockwood Air Coupling Locks have been designed for the securing of Truck (Trailer) and industrial compressed air line applications. When attached to the air line this product provides security and safety.

Security: Whereby the air brakes air line fitting is effectively sealed when the lock is attached, preventing connection to the opposing fitting. In the case of a Trailer application this reduces the risk of the trailer being connected to a truck without authorisation.

Safety: In an industrial application the sealing of the air line can reduce the risk of an accidental connection of equipment when shut down for maintenance etc.

The Lockwood Air Coupling Lock range consist of two series, the AL Series and the TL Series.

AL Series

The AL Series comes with an integrated cylinder that can be keyed to most restricted key systems.

It is available in two models to suit both the ½" NPT female air coupling and the ½" NPT male air coupling.



TL Series

The TL Series is locked with a padlock. The locking point allows for use of a padlock with under 10mm shackle diameter.

It is available in two models to suit both the ½" NPT female air coupling and the ½" NPT male air coupling.



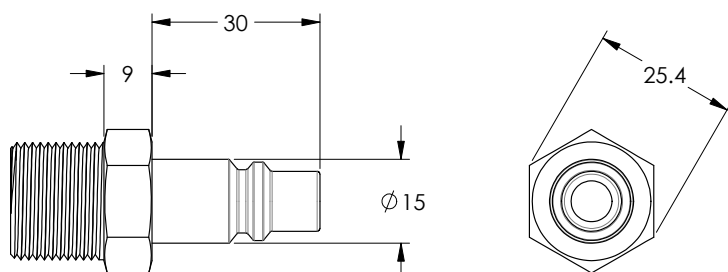
Air Coupling Types

Air Coupling Types

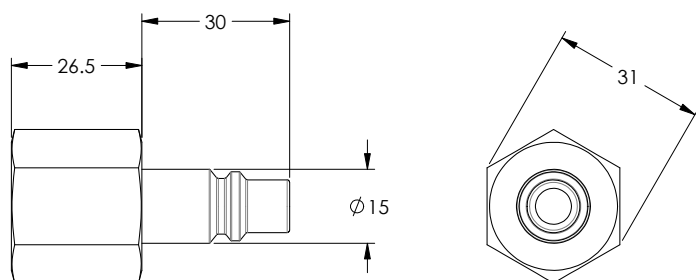
Air Couplings come in different sizes, the AL & TL Series are designed to work with ½ inch couplings;

- 1/2" NPT male coupling = AL Series 63 or TL Series 1/2IN
- 1/2" NPT female coupling = AL Series 81 or TL Series 28MM

Note: Air Couplings are not supplied.



½" NPT male thread coupling



½" NPT female thread coupling

AL Series



AL Series

The AL Series comes with an integrated cylinder that can be keyed to most restricted key systems.

It is available in two models to suit both the ½"NPT female air coupling and the ½" NPT male air coupling.

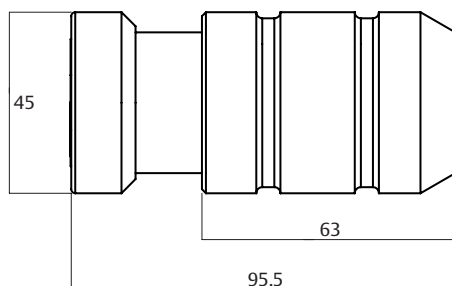
Product Details

Dimensions	Diameter: 45mm
	Length: <ul style="list-style-type: none"> • AL Series 63 - 96mm • AL Series 81 - 114mm
Materials	Inner Sleeve: Mild Steel Outer Sleeve: Case Hardened Steel
Function	Spring loaded function allowing for quick snap-on attachment to ½ inch air coupling fittings.
	Locked and unlocked by integrated cylinder. Key retained in unlocked position.
Finish	Chrome Plate (CP)
Cylinder	AL Series - 577 Synergy 3500 Series dual access lower cylinder.
Special Keying	Locks can be keyed to a number of controlled and/or specially keyed systems. These range from legally protected keys to protect against unauthorised duplication and can also include specially designed keying systems such as master key systems. This allows for different levels of mechanical access control.

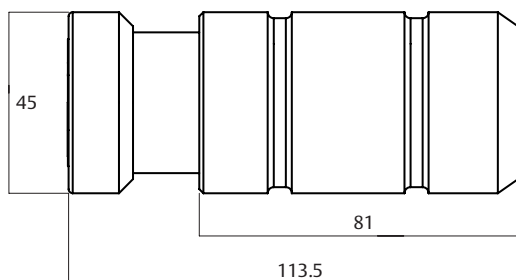
AL Series

Dimensions

AL Series 63



AL Series 81



Part Numbers

Part Number	Description	Coupling Type
AL1/2/63MM##	AL Series 63 Air Coupling Lock	½" NPT male thread coupling
AL1/2/81MM##	AL Series 81 Air Coupling Lock	½" NPT female thread coupling

Note: ## in part number is exchanged for keying type.

KD = Keyed to Differ (Standard C4 profile 6 pin)

KA = Keyed Alike (Standard C4 profile 6 pin)

MK = Master Keyed (Standard C4 profile 6 pin)

TL Series



TL Series

The TL Series is locked with a padlock. The locking point allows for use of a padlock with under 10mm shackle diameter.

It is available in two models to suit both the ½"NPT female air coupling and the ½" NPT male air coupling. •

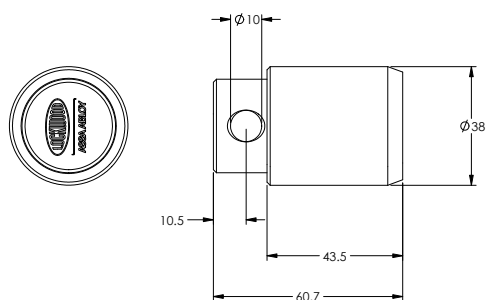
Product Details

Dimensions	Diameter: 38mm
	Length: <ul style="list-style-type: none"> • TL Series 1/2IN – 59mm • TL Series 28 – 79mm
Materials	Inner Sleeve: Mild Steel Outer Sleeve: Case Hardened Steel
Function	Spring loaded function allowing for quick snap-on attachment to ½ inch air coupling fittings.
Finish	Satin Chrome Pearl (SP)
Locking	The TL Series is locked by padlock. Padlocks are available separately and not included.
	Suits padlocks with a shackle diameter of under 10mm and minimum clearance height of 38mm.

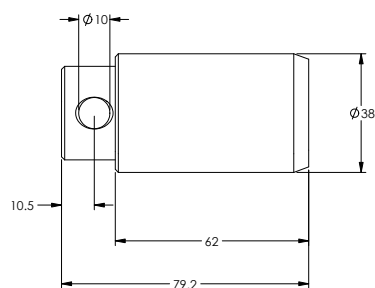
TL Series

Dimensions

TL Series 1/2IN



TL Series 28MM



Part Numbers

Part Number	Description	Coupling Type
TL1/2IN	TL Series 1/2IN Air Coupling Lock	½" NPT male thread coupling
TL28MM	TL Series 28MM Air Coupling Lock	½" NPT female thread coupling

Note: Padlocks are available separately and not included.

Safety Lockout Padlocks

Ordering Procedure

Padlock Configuration Matrix (for Reference Only)

Sample part number 312BD19E1RWKD is made up of several sections. Choose your product by selecting an option from each section.

Padlocks Ordering Procedure

Padlock Series	Profile	Function	Shackle Material	Etching	Jacket Colour	Keying
312	B	D	19	E1	RW	KD

Padlock Series	Function	Etching	Keying
Safety Lockout 312	Deadlatching (key retained when unlocked) D	Single Sided E1	Keyed to Differ KD
Profile	Latching L	Double Sided E2	Keyed Alike KA
ALR A	Shackle	Leave blank if no etching is required	Locksmith LS
32R B	19mm 19	Jacket Colour	Master Keyed MK
CNR C	38mm 38	Red Solid Jacket RD	
32S* E	50mm 50	Red Window Jacket RW	
		Orange Window Jacket OR	
		Yellow Window Jacket YE	
		Green Window Jacket GR	
		Blue Window Jacket BL	
		Purple Window Jacket PU	
		White Window Jacket WH	
		Black Solid Jacket BK	
		Black Window Jacket BW	
		Grey Window Jacket GY	
		Red Windowed Jacket with "Danger Do Not Operate" DD	
		Black and Yellow Stripe Window Jacket ST	

NOTE: 312E Series is a replacement for the old style 232 padlock with the 232 standard key profile.

When ordering MK padlocks please specify the keying details.

Part number convention if for reference only.

Padlock Configuration Matrix (for Reference Only)

Sample part number 215A40/619/BK is made up of several sections. Choose your product by selecting an option from each section.

Padlocks Ordering Procedure

Padlock Series	Case Config.	Case	Shackle Material	Shackle Opening	PackType & Keying
215	A	40	6	19	SKD

Padlock Series	Function	Shackle Opening
Contact 225	Nominal Size in mm	Nominal Size in mm
Contact 214		
Contact 215		
Case Configuration	Shackle	Pack Types and Keying
Aluminium A	Brass 5	Keyed Alike KA
Plastic P	Stainless Steel 6	5 Pin Keyed Alike 5KA
Steel S	Polymer 8	5 Pin Keyed to Differ 5KD
Zinc Z		6 Pin Keyed Alike 6KA
		6 Pin Keyed to Differ 6KD
		6 Pin Master Keyed 6MK
		Bulk BK
		Bulk (Deadlocking) DBK
		Locksmith LS



Padlock Accessories



Lockwood Padbolts are designed for both barrier and deterrent applications.

Features and Specifications

- Hardened steel shackle cover for added strength
- High cut resistant hardened steel construction
- Tamper resistant fasteners included
- 12.5mm bolt diameter

Security

Security Rating 7
Corrosion Rating 3

The security rating was achieved using the fasteners supplied in the pack. The use of fasteners other than those supplied may affect the security of this product.

Pack Variations

Available in display pack only.

Choosing the Right Padlock

For the best results it is recommended that a Lockwood padlock with the same security rating as the accessory is selected.

When the padlock and accessory are combined the lower of the two respective ratings will apply.

Product Details

Functions	Durable hardened steel
Materials	Corrosion resistant black coating

Standards and Compliance

SP7

Physical Security grades are employed for padlocks. These grades are defined in part by the effective differs and key combinations. Padlocks Physical Security (SP) grade 7



Anti-Corrosion. Corrosion Resistance Rating C3. Environments that are sometimes damp in the majority of rural and suburban localities, including interiors where condensation may occur

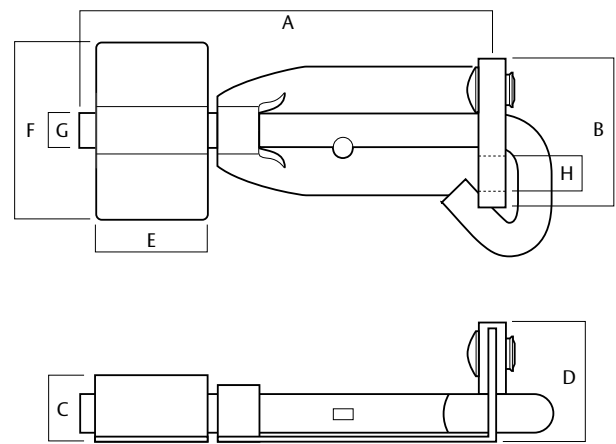
Designed and tested to the Australian Padlock Standard AS4145.4 2002 and are rated for both security and corrosion resistance.

Padbolt

Part Number	Description
PA/33/200/DP	200mm long heavy duty

Product Details – Dimensions

	A	B	C	D	E	F	G	H	Security Rating	Corrosion Resistance Rating
PA/33/200/DP	200	52	20	38	40	63	12.5	11	7	3



Locking Plates



Lockwood Locking Plates are designed for surface mounting and side mounting where general purpose security is required.

Features and Specifications

- High cut resistant hardened steel construction
- Bolt through fixing for added strength and security on surface mounted plates
- Tamper resistant concealed fixing on side mounted plates
- All fasteners included

Security

Security Rating 5 and 6

Corrosion Rating 3

The security rating was achieved using the fasteners supplied in the pack. The use of fasteners other than those supplied may affect the security of this product.

Pack Variations

Available in display pack only.

Choosing the Right Padlock

For the best results it is recommended that a Lockwood padlock with the same security rating as the accessory is selected.

When the padlock and accessory are combined the lower of the two respective ratings will apply.

Product Details

Functions	Durable hardened steel
Materials	Corrosion resistant black coating

Standards and Compliance

SP5/6

Physical Security grades are employed for padlocks. These grades are defined in part by the effective differs and key combinations. Padlocks Physical Security (SP) Grade 5 for PA/14/70/DP & (SP) Grade 6 for PA/13/70/DP



Anti-Corrosion. Corrosion Resistance Rating C3. Environments that are sometimes damp in the majority of rural and suburban localities, including interiors where condensation may occur

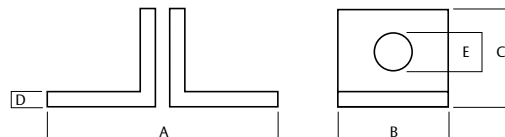
Designed and tested to the Australian Padlock Standard AS4145.4 2002 and are rated for both security and corrosion resistance.

Locking Plates

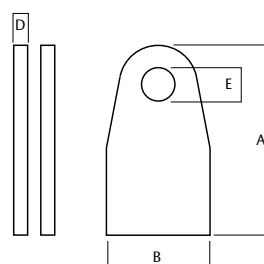
Part Number	Description
PA/13/70/DP	For non-handed, surface mounted applications
PA/14/70/DP	For non-handed, side mounted applications

Product Details – Dimensions

	A	B	C	D	E	Security Rating	Corrosion Resistance Rating
PA/13/70/DP	75	40	34	5	13	6	3
PA/14/70/DP	75	35	N/A	5	12	5	3



PA/13/70/DP



PA/14/70/DP

Locking Plates with Shackle Guard



Lockwood Locking Plates with Shackle Guard are designed for surface mounting where high security is required.

Features and Specifications

- Hardened steel shackle guard
- High cut resistant hardened steel construction
- Bolt through fixing for added strength and security
- High tensile 6mm coach bolts, nuts and washers included

Security

Security Rating 7

Corrosion Rating 3

The security rating was achieved using the fasteners supplied in the pack. The use of fasteners other than those supplied may affect the security of this product.

Pack Variations

Available in display pack only.

Choosing the Right Padlock

For the best results it is recommended that a Lockwood padlock with the same security rating as the accessory is selected.

When the padlock and accessory are combined the lower of the two respective ratings will apply.

Product Details

Functions	Durable hardened steel
Materials	Corrosion resistant black coating

Standards and Compliance

SP7

Physical Security grades are employed for padlocks. These grades are defined in part by the effective differs and key combinations. Padlocks Physical Security (SP) grade 7



Anti-Corrosion. Corrosion Resistance Rating C3. Environments that are sometimes damp in the majority of rural and suburban localities, including interiors where condensation may occur

Designed and tested to the Australian Padlock Standard AS4145.4 2002 and are rated for both security and corrosion resistance.

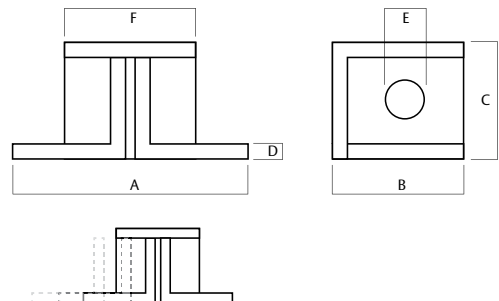
Locking Plates with Shackle Guard

Part Number	Description
PA/11/70/DP	For applications with hinges on the right and opening toward installer (LH).
PA/12/70/DP	For applications with hinges on the left and opening toward installer (RH).

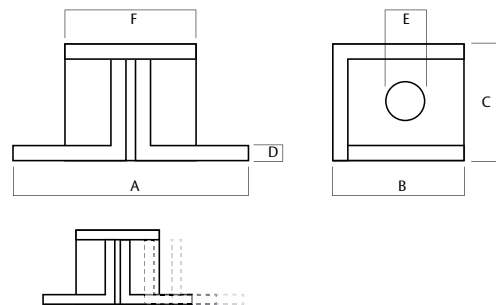
Product Details – Dimensions

	A	B	C	D	E	F	Security Rating	Corrosion Resistance Rating
PA/11/70/DP	70	40	39	5	13	50	7	3
PA/12/70/DP	70	40	39	5	13	50	7	3

PA/11/70/DP



PA/12/70/DP



Hasp and Staples



Lockwood Hasp and Staples are designed for both barrier and deterrent applications.

Features and Specifications

- High cut resistant hardened steel construction with strengthening ribs and rolled edges for added protection
- Tamper resistant concealed fixing
- All fasteners included

Security

Security Rating 3 and 5

Corrosion Rating 3

The security rating was achieved using the fasteners supplied in the pack. The use of fasteners other than those supplied may affect the security of this product.

Pack Variations

Available in display pack only.

Choosing the Right Padlock

For the best results it is recommended that a Lockwood padlock with the same security rating as the accessory is selected.

When the padlock and accessory are combined the lower of the two respective ratings will apply.

Product Details

Functions	Durable hardened steel
Materials	Corrosion resistant black coating

Standards and Compliance

SP3/5

Physical Security grades are employed for padlocks. These grades are defined in part by the effective differs and key combinations. Padlocks Physical Security (SP) Grade 3 for PA/21/90/DP & (SP) Grade 5 for PA/21/120/DP



Anti-Corrosion. Corrosion Resistance Rating C3. Environments that are sometimes damp in the majority of rural and suburban localities, including interiors where condensation may occur

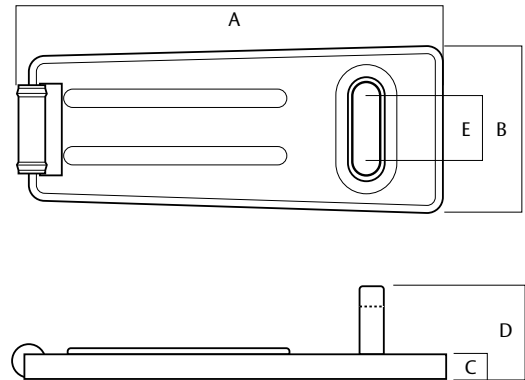
Designed and tested to the Australian Padlock Standard AS4145.4 2002 and are rated for both security and corrosion resistance

Hasp and Staples

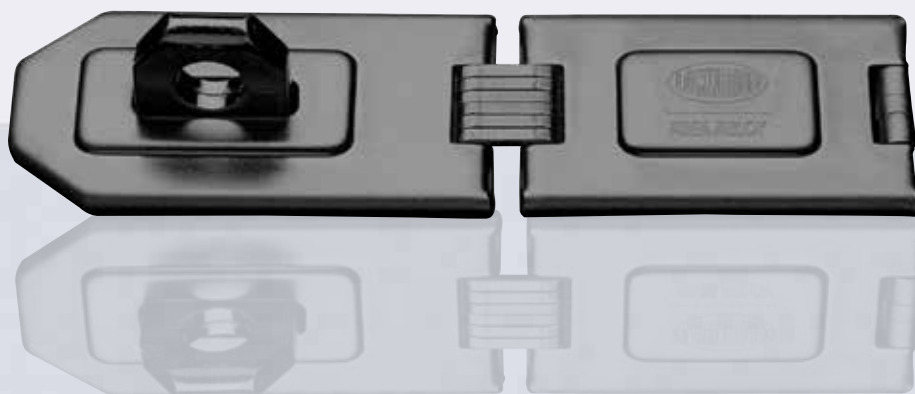
Part Number	Description
PA/21/90/DP	90mm long Hasp and Staple
PA/21/120/DP	120mm long Hasp and Staple

Product Details – Dimensions

	A	B	C	D	E	Security Rating	Corrosion Resistance Rating
PA/21/90/DP	90	37	6.5	23	10	3	3
PA/21/120/DP	120	45	7.5	28.5	12	5	3



Hasp and Staples - Hinged



Lockwood Hinged Hasp and Staples are designed for general purpose security applications.

Features and Specifications

- Double hinged design for added flexibility
- High cut resistant hardened steel construction with strengthening ribs and rolled edges for added protection
- Tamper resistant concealed fixing
- All fasteners included

Security

Security Rating 6

Corrosion Rating 3

The security rating was achieved using the fasteners supplied in the pack. The use of fasteners other than those supplied may affect the security of this product.

Pack Variations

Available in display pack only.

Choosing the Right Padlock

For the best results it is recommended that a Lockwood padlock with the same security rating as the accessory is selected.

When the padlock and accessory are combined the lower of the two respective ratings will apply.

Product Details

Functions	Durable hardened steel
Materials	Corrosion resistant black coating

Standards and Compliance

SP6

Physical Security grades are employed for padlocks. These grades are defined in part by the effective differs and key combinations. Padlocks Physical Security (SP) Grade 6



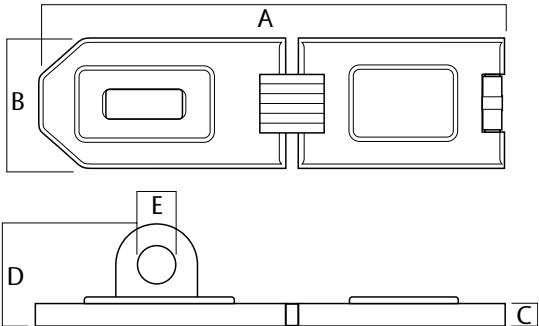
Anti-Corrosion. Corrosion Resistance Rating C3. Environments that are sometimes damp in the majority of rural and suburban localities, including interiors where condensation may occur

Designed and tested to the Australian Padlock Standard AS4145.4 2002 and are rated for both security and corrosion resistance

Hasp and Staples - Hinged

Part Number	Description
A/23/160/DP	160mm long Hinged Hasp and Staple

Product Details – Dimensions							
	A	B	C	D	E	Security Rating	Corrosion Resistance Rating
PA/23/160/DP	160	46	9	31	12.5	6	3



Hasp and Staples – Heavy Duty



Lockwood Heavy Duty Hasp and Staples are designed for high security applications.

Features and Specifications

- High cut resistant hardened steel construction
- Bolt through tamper resistant concealed fixing for added strength and security
- All fasteners included

Security

Security Rating 7

Corrosion Rating 3

The security rating was achieved using the fasteners supplied in the pack. The use of fasteners other than those supplied may affect the security of this product.

Pack Variations

Available in display pack only.

Choosing the Right Padlock

For the best results it is recommended that a Lockwood padlock with the same security rating as the accessory is selected.

When the padlock and accessory are combined the lower of the two respective ratings will apply.

Product Details

Functions	Durable hardened steel
Materials	Corrosion resistant black coating

Standards and Compliance

SP7

Physical Security grades are employed for padlocks. These grades are defined in part by the effective differs and key combinations. Padlocks Physical Security (SP) grade 7



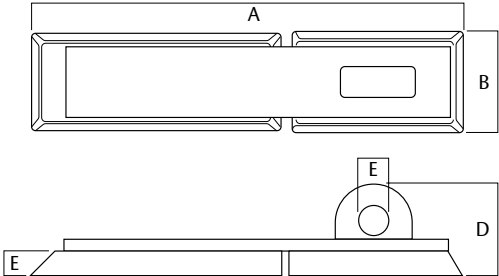
Anti-Corrosion. Corrosion Resistance Rating C3. Environments that are sometimes damp in the majority of rural and suburban localities, including interiors where condensation may occur

Designed and tested to the Australian Padlock Standard AS4145.4 2002 and are rated for both security and corrosion resistance.

Hasp and Staples – Heavy Duty

Part Number	Description
PA/21/190/DP	190mm long Heavy Duty Hasp and Staple

Product Details – Dimensions								
	A	B	C	D	E	Security Rating	Corrosion Resistance Rating	
PA/21/190/DP	190	44	9.5	40	14	7	3	



Hasp and Staples – Pivoting



Lockwood Pivoting Hasp and Staples are designed for high security applications.

Features and Specifications

- Pivoting hasp design for added flexibility
- High cut resistant hardened steel construction
- Bolt through tamper resistant concealed for added strength and security
- All fasteners included

Security

Security Rating 7

Corrosion Rating 3

The security rating was achieved using the fasteners supplied in the pack. The use of fasteners other than those supplied may affect the security of this product.

Pack Variations

Available in display pack only.

Choosing the Right Padlock

For the best results it is recommended that a Lockwood padlock with the same security rating as the accessory is selected.

When the padlock and accessory are combined the lower of the two respective ratings will apply.

Product Details

Functions	Durable hardened steel
Materials	Corrosion resistant black coating

Standards and Compliance

SP7

Physical Security grades are employed for padlocks. These grades are defined in part by the effective differs and key combinations. Padlocks Physical Security (SP) grade 7



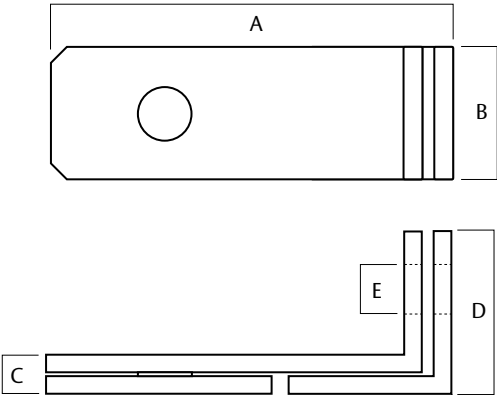
Anti-Corrosion. Corrosion Resistance Rating C3. Environments that are sometimes damp in the majority of rural and suburban localities, including interiors where condensation may occur

Designed and tested to the Australian Padlock Standard AS4145.4 2002 and are rated for both security and corrosion resistance.

Hasp and Staples – Pivoting

Part Number	Description
PA/25/105/DP	105mm long Pivoting Hasp and Staple

Product Details – Dimensions								
	A	B	C	D	E	Security Rating	Corrosion Resistance Rating	
PA/25/105/DP	105	35	11	42	12	7	3	



Padlock Chain



Lockwood Chains are designed for both general purpose and maximum security applications.

Features and Specifications

- Hardened manganese alloy steel chain for added strength
- High cut resistant hardened steel construction
- Accepts up to 12.5mm padlock shackle diameter
- Tough fabric sleeve, shields the chain from the elements while reducing the chance of scratching
- 900mm in length

Security

Security Rating 7

Corrosion Rating 3

Pack Variations

Available in display pack only.

Choosing the Right Padlock

For the best results it is recommended that a Lockwood padlock with the same security rating as the accessory is selected.

When the padlock and accessory are combined the lower of the two respective ratings will apply.

Product Details

Functions Hardened manganese alloy steel

Materials High cut resistant hardened steel

Standards and Compliance

SP7

Physical Security grades are employed for padlocks. These grades are defined in part by the effective differs and key combinations. Padlocks Physical Security (SP) grade 7



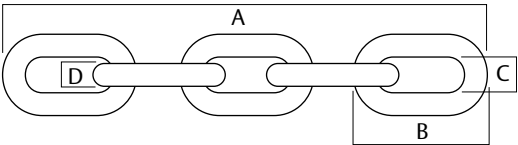
Anti-Corrosion. Corrosion Resistance Rating C3. Environments that are sometimes damp in the majority of rural and suburban localities, including interiors where condensation may occur

Designed and tested to the Australian Padlock Standard AS4145.4 2002 and are rated for both security and corrosion resistance.

Padlock Chain

Part Number	Description
LCHL1/8/90/F	Hardened steel 900mm chain with fabric cover

Product Details – Dimensions						
	A	B	C	D	Security Rating	Corrosion Resistance Rating
LCHL1/8/90/F	900	52	13	8	7	3





ASSA ABLOY

Lockwood is the leading brand in the Australian locking industry. With an established reputation for high quality products, this iconic brand provides a wide range of locking solutions to residential housing, commercial building and industrial application markets. Lockwood is supported by an extensive distribution and after-sales support network. Our customers include retailers, architects, trade and industrial personnel, locksmiths and security dealers.

ASSA ABLOY is the global leader in door opening solutions, dedicated to satisfying end-user needs for security, safety and convenience.

ASSA ABLOY is represented in all major regions, in both mature and emerging markets, with leading positions in Australia, Europe and North America.

25YEAR

**MECHANICAL
WARRANTY**

The Lockwood 25 Year Mechanical Warranty

Our belief that we manufacture the finest premium products available in today's market place is backed by the Lockwood 25 Year Mechanical Warranty, ensuring that Lockwood continues to keep Australians safe by delivering security and peace of mind.

For warranty terms and conditions, please visit www.lockweb.com.au or call 1300WARRANTY

ASSA ABLOY Australia Pty Ltd
235 Huntingdale Road
Oakleigh, Victoria, 3166
Australia

1300 LOCK UP (1300 562 587)
lockweb.com.au

ASSA ABLOY New Zealand Ltd
6 Armstrong Road
Albany, Auckland, 0632
New Zealand

info.nz@assaabloy.com
Telephone +64 9415 7111
assaabloy.co.nz

Disclaimer

Whilst every effort has been made to ensure that the information (including product images and drawings) contained in this brochure is accurate at the time of publication, ASSA ABLOY Australia Pty Limited ("ASSA ABLOY") recommends that you consult ASSA ABLOY or its agents prior to placing an order to ascertain current information on specific products, as ASSA ABLOY reserves the right to make changes without notice. ASSA ABLOY will not be liable for any injury, loss or damage whatsoever, arising from any errors or omissions in the information contained in the brochure or arising from the use or application of the information contained herein. © 2020 copyright by ASSA ABLOY All rights reserved

