



# COAT HOOKS & DOOR STOPS

— V 2 —



MDZ-2009  
GECA 28-2006-  
FURNITURE AND FITTINGS

## INTRODUCTION

**Inspired by design, innovation and functionality, we are pleased to present our Coat Hooks & Door Stops catalogue.**

**Madinoz** - as the name implies, is Made In OZ. It is our ability to work closely with architects, designers and developers which has allowed us to evolve with the market.

We are manufacturers of an ever expanding comprehensive range of architectural door hardware and use only quality materials such as solid brass and 316 marine-grade stainless steel to ensure lifelong usage.

Architects and designers may now be confident in selecting a quality well priced range with a distinctive design theme that will 'speak' throughout the whole project.

Madinoz combines handcrafted tradition with modern technology, to provide a well priced product range which is refined to the smallest detail.

Please feel free to contact Madinoz should you have any special requirements or if you would like one of our Architectural Consultants to call on you.

We look forward to helping you and thank you for your interest and support.

### **Madinoz Pty Ltd**

Unit 3 / 1-7 Ada Avenue, Brookvale NSW 2100 Australia

Telephone: **(02) 9939 2007**

Facsimile: (02) 9939 8432

E-mail: [sales@madinoz.com.au](mailto:sales@madinoz.com.au)

Website: [www.madinoz.com.au](http://www.madinoz.com.au)

## GENERAL INFORMATION

### Finishes:

SC -	Satin Chrome Plate	PW -	Powder Coat
SN -	Satin Nickel	BC -	Black Chrome
PC -	Polished Chrome	SSS -	Satin Stainless Steel
PB -	Polished Brass	PSS -	Polished Stainless Steel

### Guarantee:

Madinoz Pty Ltd unconditionally guarantee their products against defects in workmanship and materials, subject to fair wear and tear within the normal working life of the product. Madinoz Pty Ltd assumes no liability for:

1. Improper installation or failure to follow fitting instructions.
2. Failure to improper maintenance.
3. Indirect or inconsequential loss or damage.
4. Cost of removal and/or replacement.
5. Cost of freight and/or travelling.

### Design Registration:

Some of the products depicted in this catalogue are the subject of design registration.

### Warranty on electroplated finishes:

Our products have undergone the best available treatment to protect their surface from tarnishing and other deterioration due to use, weather exposure and other factors.

Brass however, is a material which is naturally subject to some discolouration and although our finishes are highly protective, they have limitations as to their durability and the conditions they can be exposed to. Therefore no guarantee can be given that their protection will be maintained indefinitely, but tarnishing and excessive wear of these finishes are to be considered normal and acceptable and not represent a defect of the product.

The plated finishes (Black Chrome, Satin Chrome, Polished Chrome, Polished Brass) and Polyester Powder Coat are classified as soft finishes. As deterioration is possible under some climatic conditions, these finishes cannot be unconditionally guaranteed.

### Cleaning:

Madinoz products should be cleaned at regular intervals with a soft 'grit-free' cloth, clean soapy water and wiped dry.

### Warning:

Do not use a scouring pad of any type as this will cause excessive wear on the plated finish.

## MADINOZ PRODUCT RECYCLING STEWARDSHIP POLICY

*“With greater concerns about sustainability, designers are looking for low environmental impact solutions but do not want to compromise on aesthetics; Madinoz offers both.”*

Guy Frangi, Manager  
Madinoz Architectural Door Hardware  
Australia

Madinoz Architectural Door Hardware, the highly regarded Australian manufacturer of stylish and premium quality door hardware, is very pleased to comply with **The Good Environmental Choice Australia Label (GECA)** which indicates the environmental performance of a product from multi-criteria and a whole of the product life perspective. Products certified by GECA provide Green Star accredited professionals with the right resources for their Green Star projects.



To move towards sustainable consumption buyers need to recognise which products and services have preferable environmental outcomes.

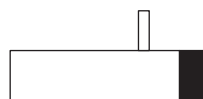
Madinoz is committed to undertaking a **Product Recycling Stewardship Program**, under which all brass and stainless steel components manufactured by Madinoz can be returned through the selected distributor for recycling at the end of product life. Madinoz ensures that all brass or stainless steel hardware, fittings, handles and accessories returned at product end of life will be recycled through relevant resource recovery networks and will not end up in Landfill\*.

No other costs are chargeable to the consumer apart from transport cost to the Madinoz facility at Unit 3/1-7 Ada Avenue, Brookvale NSW 2100.

Please contact your distributor of Madinoz products to arrange return of goods. A tax receipt or some other documentary evidence from the original purchase must be retained in order to facilitate resource recovery.

**madinoz MDZ CH95**FINISH AVAILABLE IN **SSS** **PSS** **SC** **PB** **BC** **PW**

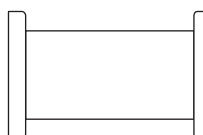
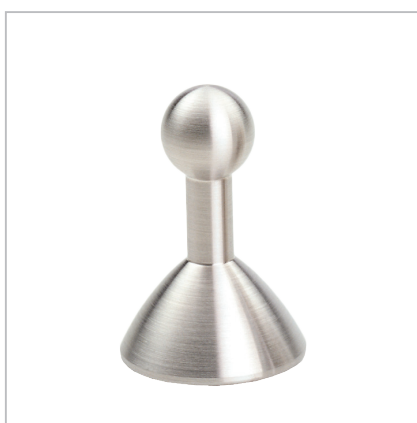
Product No.	Projection mm	Diameter mm
<b>MDZ CH95</b>	77	16



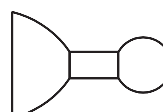
NOTE:  
Coat hook with rubber bumper

**madinoz MDZ CH180**FINISH AVAILABLE IN **SSS** **PSS** **SC** **PB** **BC** **PW**

Product No.	Projection mm	Diameter mm
<b>MDZ CH180</b>	36	20

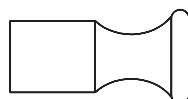
**madinoz MDZ CH181**FINISH AVAILABLE IN **SSS** **PSS**

Product No.	Projection mm	Diameter mm
<b>MDZ CH181</b>	36	24

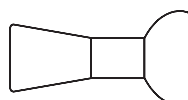


**madinoz MDZ CH182**FINISH AVAILABLE IN **SSS** **PSS**

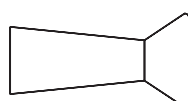
Product No.	Projection mm	Diameter mm
<b>MDZ CH182</b>	40	21

**madinoz MDZ CH183**FINISH AVAILABLE IN **SSS** **PSS**

Product No.	Projection mm	Diameter mm
<b>MDZ CH183</b>	40	21

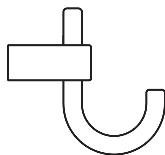
**madinoz MDZ CH184**FINISH AVAILABLE IN **SSS** **PSS**

Product No.	Projection mm	Diameter mm
<b>MDZ CH184</b>	40	21



**madinoz MDZ CH187**

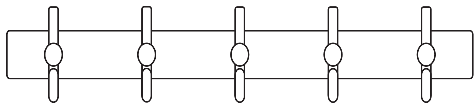
FINISH AVAILABLE IN **SSS** **PSS**



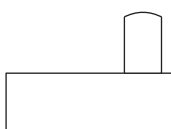
Product No.	Projection mm	Width mm	Diameter mm
MDZ CH187	85	19	10

**madinoz MDZ CH187/5**

FINISH AVAILABLE IN **SSS** **PSS**



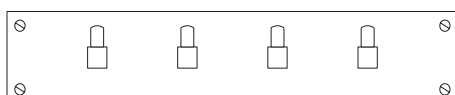
Product No.	Projection mm	Width mm	Centre to centre mm
MDZ CH187/5	88	500	400

**madinoz MDZ CH188**FINISH AVAILABLE IN **SSS** **PSS****Product No.****MDZ CH188****Projection  
mm**

48

**Section  
mm**

16x16

**madinoz MDZ CH188/4**FINISH AVAILABLE IN **SSS** **PSS****Product No.****MDZ CH188/4****Projection  
mm**

48

**Width  
mm**

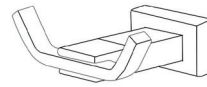
350

**Centre  
to centre  
mm**

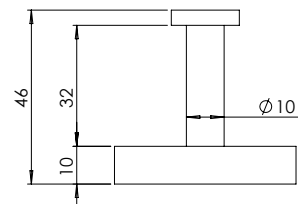
330

**madinoz MDZ CH425**FINISH AVAILABLE IN **SSS** **PSS**

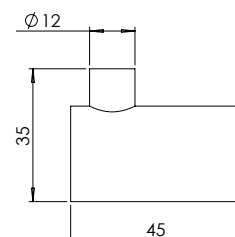
Product No.	Projection mm	Base mm
<b>MDZ CH425</b>	72	50x35

**madinoz MDZ CH7101**FINISH AVAILABLE IN **SC** **PC**

Product No.	Projection mm	Diameter mm
<b>MDZ CH7101</b>	46	48

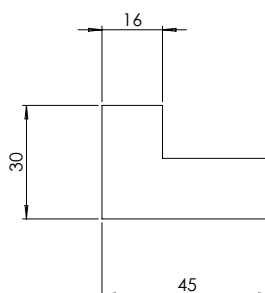
**madinoz MDZ CH7201**FINISH AVAILABLE IN **SSS** **PSS**

Product No.	Projection mm	Diameter mm
<b>MDZ CH7201</b>	45	25

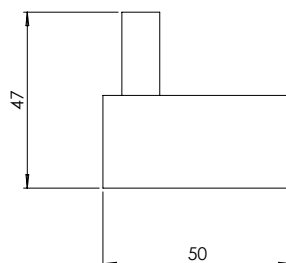


**madinoz MDZ CH7401**FINISH AVAILABLE IN **SSS** **PSS**

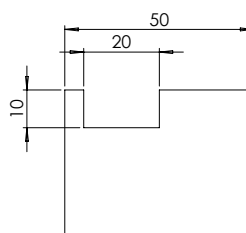
Product No.	Projection mm	Section mm
<b>MDZ CH7401</b>	45	30x16

**madinoz MDZ CH7501**FINISH AVAILABLE IN **SSS** **PSS**

Product No.	Projection mm	Section mm
<b>MDZ CH7501</b>	50	47x25

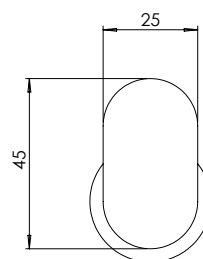
**madinoz MDZ CH7601**FINISH AVAILABLE IN **SSS** **PSS**

Product No.	Projection mm	Section mm
<b>MDZ CH7601</b>	50	40x20



**madinoz MDZ CH7701**FINISH AVAILABLE IN **SSS** **PSS**

Product No.	Projection mm	Diameter mm
<b>MDZ CH7701</b>	51	32

**madinoz MDZ DS90**FINISH AVAILABLE IN **SSS** **PSS**

Product No.	Projection mm	Diameter mm
<b>MDZ DS90</b>	38	37.5



NOTE:  
Door stop with rubber bumper

**madinoz MDZ DS95**FINISH AVAILABLE IN **SSS** **PSS** **SC** **PB** **BC** **PW**

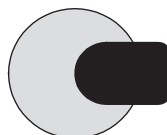
Product No.	Projection mm	Diameter mm
<b>MDZ DS95</b>	77	16



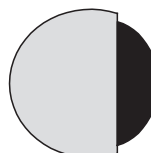
NOTE:  
Door stop with rubber bumper

**madinoz MDZ DS101**FINISH AVAILABLE IN **SSS** **PSS**

Product No.	Projection mm	Diameter mm
<b>MDZ DS101</b>	20	50

**madinoz MDZ DS102**FINISH AVAILABLE IN **SSS** **PSS**

Product No.	Projection mm	Diameter mm
<b>MDZ DS102</b>	14	47

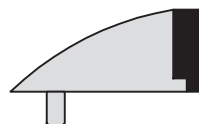
**madinoz MDZ DS103**FINISH AVAILABLE IN **SSF** **PC**

Product No.	Projection mm	Diameter mm
<b>MDZ DS103</b>	26	45



**madinoz MDZ DS104**FINISH AVAILABLE IN **SSF** **PC**

Product No.	Proj. mm	Width mm	Square mm
<b>MDZ DS104</b>	28	76	28

**madinoz MDZ DS105**FINISH AVAILABLE IN **SSF** **PC**

Product No.	Projection mm	Diameter mm
<b>MDZ DS105</b>	40	40

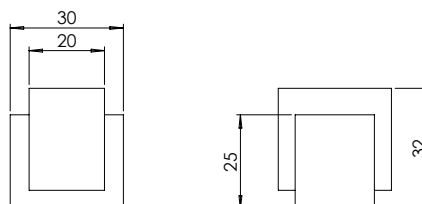
**madinoz MDZ DS106**FINISH AVAILABLE IN **SSF** **PC**

Product No.	Projection mm	Diameter mm
<b>MDZ DS106</b>	23	40

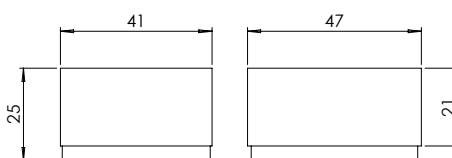


**madinoz MDZ DS107**FINISH AVAILABLE IN **SN** **PC**

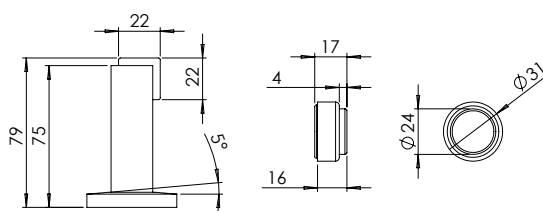
Product No.	Projection mm	Width mm
<b>MDZ DS107</b>	32	30

**madinoz MDZ DS108**FINISH AVAILABLE IN **SN**

Product No.	Projection mm	Width mm
<b>MDZ DS108</b>	25	41

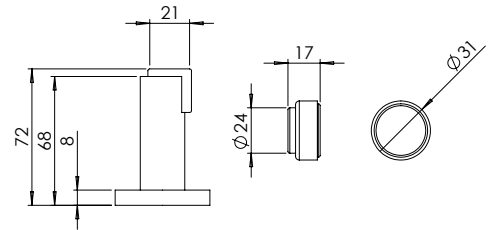
**madinoz MDZ DS109**FINISH AVAILABLE IN **SN** **PC**

Product No.	Projection mm	Width mm
<b>MDZ DS109</b>	79	48

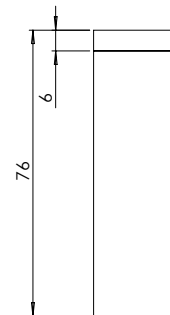


**madinoz MDZ DS110**FINISH AVAILABLE IN **SN** **PC**

Product No.	Projection mm	Diameter mm
<b>MDZ DS110</b>	72	50

**madinoz MDZ DS111**FINISH AVAILABLE IN **SSS** **PSS**

Product No.	Projection mm	Width mm
<b>MDZ DS111</b>	76	22

**madinoz MDZ Wedge**FINISH AVAILABLE IN **PC**

Product No.	Length mm	Height mm
<b>MDZ Wedge</b>	120	30



For further information please contact Madinoz.

Unit 3 / 1-7 Ada Avenue, Brookvale NSW 2100 Australia

Telephone: **(02) 9939 2007**

Facsimile: (02) 9939 8432

E-mail: [sales@madinoz.com.au](mailto:sales@madinoz.com.au)

Website: [www.madinoz.com.au](http://www.madinoz.com.au)